

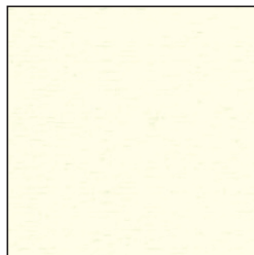
## Exterior Fabric Color Chart



**White**



**Off White**



**Bone White**



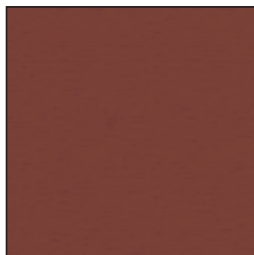
**Eggshell**



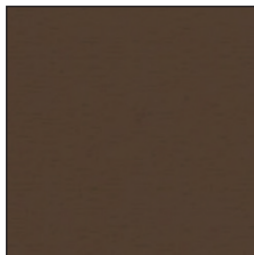
**Khaki**



**Tangerine**



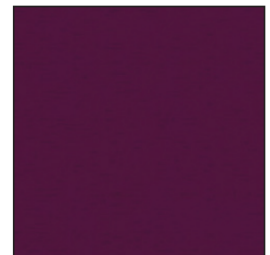
**Terra Cotta**



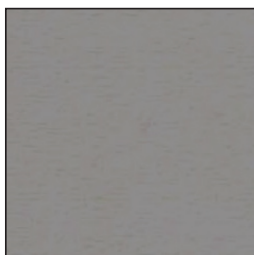
**Brown**



**Red**



**Burgundy**



**Pearl Gray**



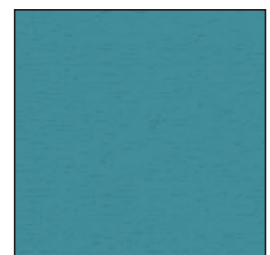
**Light Gray**



**Royal Blue**



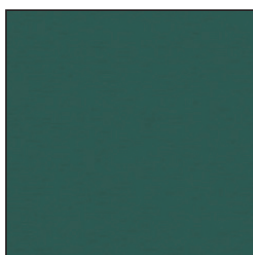
**Blueberry**



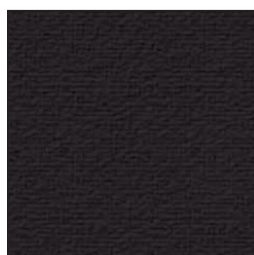
**Teal Blue**



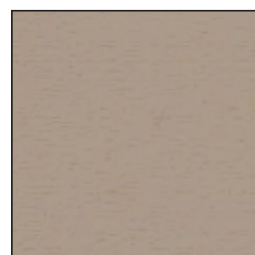
**Emerald Green**



**Forest Green**



**Black**



**Tan**

Colors are a close approximation of actual materials and are not exact matches.

## **Exterior Fabric Flame Retardancy**

The Exterior Fabric meets California State Fire Marshall requirements for flame retardancy: Title 19, CPAI-84 (Section 6), and FMVSS-302.

**\*\* Class B – For Outdoor Use Only**

## **Exterior Fabric Technical Support**

Reproduction of actual color is limited by the printing process. A sample request of selected color is recommended. Dye lots may vary. Additional colors may be available, subject to minimum quantities. All products are custom manufactured and are not subject to return.

## **Exterior Fabric Cleaning Instructions**

For initial cleaning, use a concentrated, granular cleaner specifically for woven fabrics. A concentrated vinyl cleanser and deoxidizer which removes streaking, chalking and oxidation from the vinyl can be used for general maintenance. A vinyl protector that helps restore vitality to the vinyl that has been damaged may also be used. A harsh, abrasive or strong solution should never be used to clean these panels.

Keep your Exterior Fabric panels clean to prevent mildew which can damage or stain the fabric. When washing down your panels, brush lightly with a soft brush. If you use a mild soap, rinse thoroughly and immediately. Occasionally hose down your Exterior Fabric panels to prevent damages and staining of the fabric.

Do not get insect spray on your exterior panels as they may impair the water repellency of the fabric. Do not allow water to stand on your panels as this could cause the panels to stretch. Small rips or tears should not be ignored, the panel should be replaced. When storing your panels, make sure the material is not damp or wet.